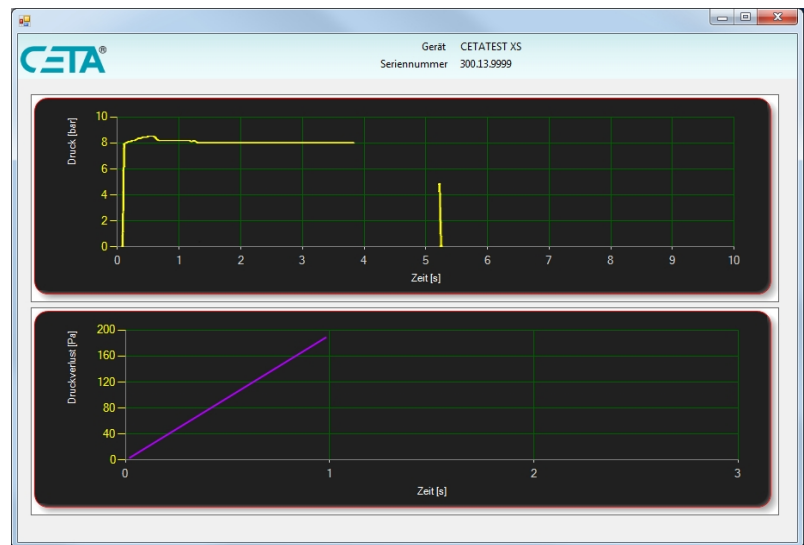
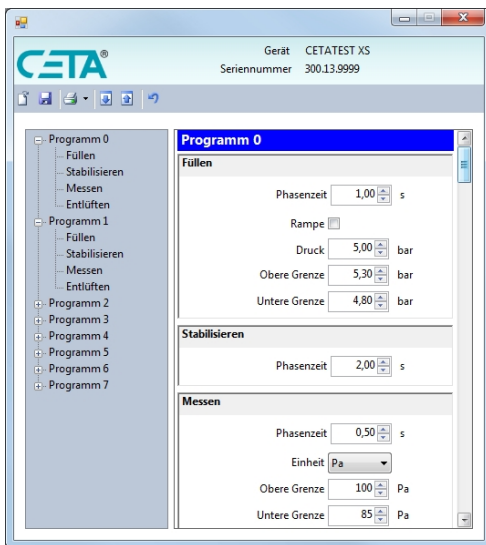


Leak Tester CETATEST XS



Operating principle	The CETATEST XS is a compact, cost-effective and fully automatic working leak tester for the detection of untight parts within the cycle time of the production process. The leak tester uses a gauge pressure sensor for the measurement of the pressure loss caused by the leakage in the test part (relative pressure method).
Operating method	One-channel operation
Signal processing	24-Bit-A/D-Converter
Valve type	Electromagnetically controlled multi-function block
Sensor	Relative pressure sensor
Measurement range	Up to 20.000 Pa, depending on the test pressure (displayed resolution: 1 Pa) other ranges on request
Result units	Pa, hPa (pressure loss) bar (test pressure)
Electronically regulated test pressure ranges	-1.000 mbar; 200 mbar; 1.000 mbar; 6,00 bar; 10,00 bar negative gauge pressure and positive gauge pressure ranges can be combined, other pressures and mechanical pressure regulator on request
Test mode	Pressure loss measurement
Test options	Smooth filling, prefill
Programmable test phases	Application-specific configuration
Test mode specific limits	filling pressure, test part specific reject and rework levels
Handling	Digital I/O or by PC software, remote control (optional)
Parameter Memory	8 test programs, parameterizing by CETA PC software



Interfaces

Function	Digital I/O (Standard)	RS-232 (ASCII)	USB-Slave (by CETA PC software)
Start / Stop	X		X
Program selection	X		X
Device status / System fault	X		X
Evaluation (Pass / Fail)	X	X	X
Measurement results		X	X
Parameterization			X

Power supply and power consumption

24 VDC by external power supply depending on stage of expansion max. 20 W

Compressed air supply

0.5 bar above test pressure resp. 50 mbar under evacuation pressure (ISO 8573-1)

Pneumatic connections

Input (compressed air supply): 6 mm plug-in fitting
Port for test part: 6 x 1 mm fitting, 6 mm clamping ring [option]

Dimensions

Width: 280 mm, Height: 90 mm, Depth: 250 mm

Weight

approximately 6 kg

Included in delivery

Power supply, USB-cable, documentation and PC-software on CD, calibration certificate, declaration of conformity, D-Sub-plug including cable for inputs and outputs (PLC-communication)

Warranty

3 years in case of yearly maintenance, optional prolongation to 5 years

Accessories (optional)

Filter combination, standard leak, leak tight 3/2-way-valve, remote control more in the CETA accessories catalogue.

CETA Testsysteme GmbH
Marie-Curie-Straße 35-37
40721 Hilden
DEUTSCHLAND

Tel.: +49 (0) 2103 / 2471 - 75
 Fax: +49 (0) 2103 / 2471 - 76
 E-Mail: sales@cetatest.com
 Internet: www.cetatest.com