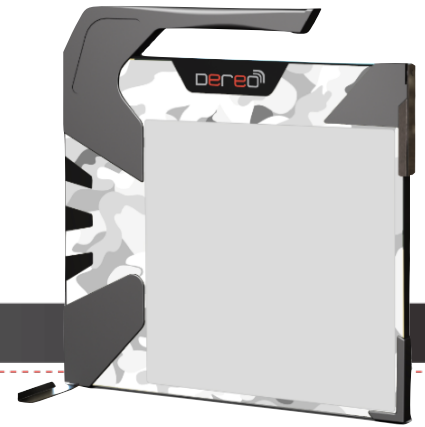


## Portable X-ray DR solution for **Security** inspections

### APPLICATIONS

- ▶ Inspections of suspicious objects in public areas
- ▶ Inspections of parcels, cars (door, trunk, tires, engine parts, ...), pieces of luggage to search for illegal materials and equipment, or in the scope of counter-smuggling
- ▶ Inspections of walls and furniture to search for bugs and miniature cameras
- ▶ X-ray dead tissue and objects at a crime scene or in laboratories



### KEY FEATURES

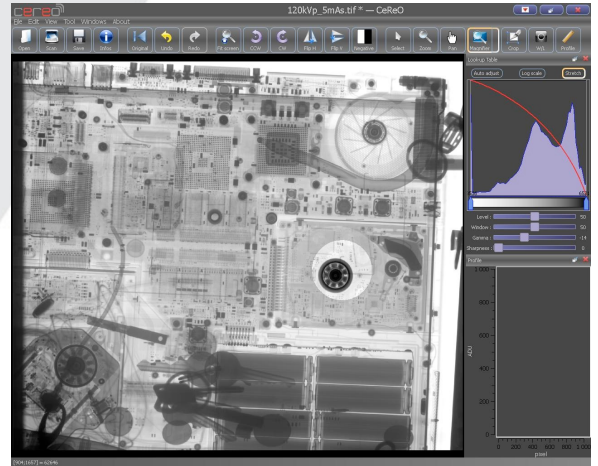
- |                     |  |
|---------------------|--|
| Portable            | ▶ X-ray pictures anywhere  |
| <b>Large area</b>   | ▶ Active area of 41 x 41 cm for big objects  |
| Quick set-up        | ▶ X-ray pictures at anytime  |
| <b>Digital</b>      | <ul style="list-style-type: none"><li>▶ Instant results</li><li>▶ Very easy set-up and use, thanks to the automatic real-time filter magnifier, and to the wide contrast latitude of digital technologies</li><li>▶ User-friendly Maestro software</li><li>▶ Post-processing</li><li>▶ TIFF &amp; JPG format</li><li>▶ Easy archiving &amp; reporting</li><li>▶ No more consumables (films and chemicals) &amp; dark room needed</li></ul> |
| Image quality       | <ul style="list-style-type: none"><li>▶ High resolution and high contrast (14 or 16 bit)</li><li>▶ Impressive penetration capability</li></ul>   |
| Highest sensitivity | ▶ Ability to X-ray a large range of different objects and materials, from light materials such as paper, up to 70 mm of Fe   |
| Large kV range      | ▶ <b>Possibility to slide the DeReO WA-P between 2 objects</b>   |
| <b>Thin</b>         | ▶ <b>Real-time X-ray videos for perfect image adjustment. No more concern about kV and mA selection thanks to real-time video [1 frame per second]</b>   |
| <b>Real-time</b>    | ▶ <b>Works with any kind of X-ray generator (GemX, Golden, ... )</b>   |
| <b>Flexibility</b>  | ▶ <b>High end system with unique features to come</b>  |

## DeReO WA-P FLAT PANEL

- ▶ Active area : 41 x 41 cm
- ▶ Resolution : 200  $\mu$ m
- ▶ Greyscale : 14 bit (16 bit as option)
- ▶ Gadox or CSI screen
- ▶ Total dimensions : L610 x H600 x 30 mm
- ▶ Weight : < 11,8 kg
- ▶ No kV limit
- ▶ Real-time :
  - 1 frame per second
  - 4 frames per second (option)

## MAESTRO SOFTWARE

- ▶ Very **intuitive** software interface
- ▶ **Real time X-ray capture**
- ▶ GemX control with kV and mA adjustment in real time
- ▶ Zoom in, zoom out and screen adjustment
- ▶ Picture rotation
- ▶ Horizontal / Vertical flip
- ▶ Cropping
- ▶ Access to the LUT (look-up-table)
- ▶ Black and white reversal
- ▶ Real time filter magnifier
- ▶ Real time edge enhancement filter
- ▶ Embossing filter
- ▶ Range of specific NDT filters and tools (noise reduction, frequency filter, ...)
- ▶ Measurement / profile
- ▶ Anotations
- ▶ Original picture data are saved and always follow the modified image
- ▶ Pixel map
- ▶ Any language available upon request
- ▶ X-RIS is open to discuss the development of new software tools

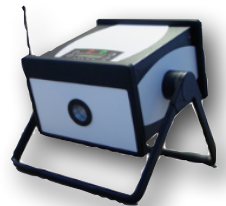


## DeReO WA-P OPTIONS

- ▶ Wireless modules
- ▶ Battery-powered
- ▶ Control of GemX via Maestro software
- ▶ IP66 Carrying case
- ▶ Golden Engineering X-ray generators
- ▶ GemX portable CP X-ray generators :
  - Wireless remote control :
  - Battery (30 min of X-ray) or mains :
  - Voltage range :
  - Current :
  - Mini focal spot :
  - Window :
  - Insulation :
  - Penetration
  - All-terrain 360° handle :
  - Accessories :

**GemX-160 (14 kg)**  
Yes  
Yes  
20 - 160 kV  
0.1 - 2 mA  
0.5 x 0.7 mm  
Be or Al  
Oil (2h of X-ray/day)  
Up to 36 mm of Fe  
Yes  
Tripod, lead cap, laser pointer, flashing lights ...

**GemX-200 (21 kg)**  
Yes  
Yes  
50 - 200 kV  
0.1 - 1.5 mA  
0.5 x 0.7 mm  
Al  
Oil (3h of X-ray/day)  
> 70 mm of Fe  
Yes



[www.xris.eu](http://www.xris.eu)