

Industrial X-Ray Technology

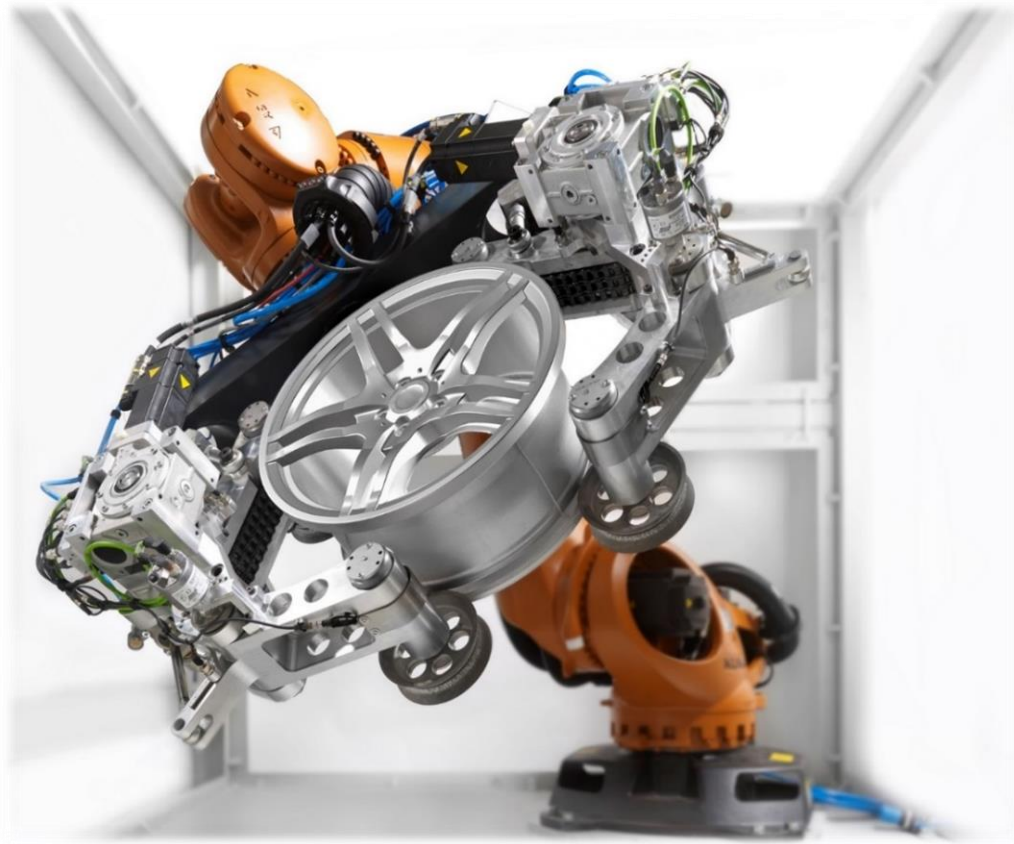


KEY FACTS:

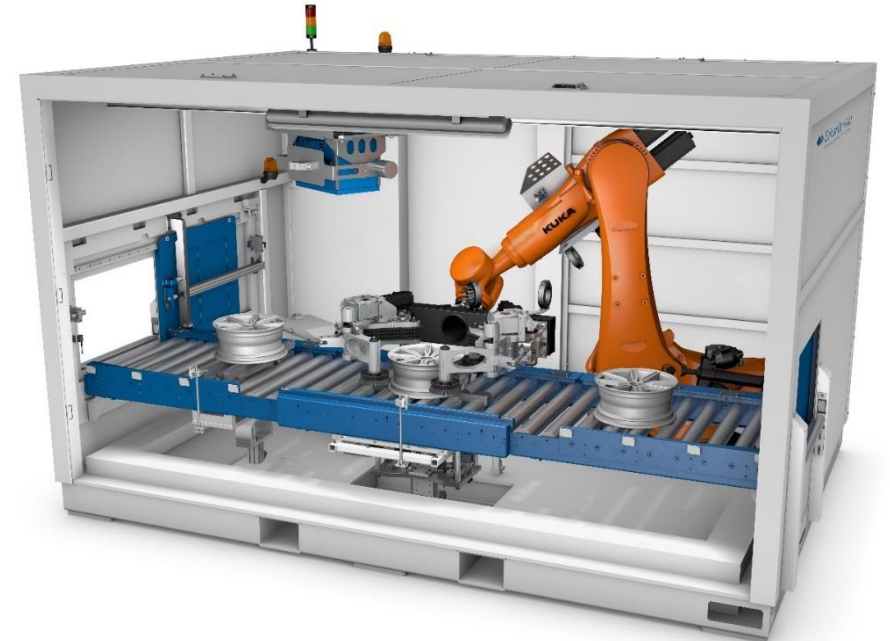
- › Fully automatic wheel test system
- › 40 - 70 % higher throughput than comparable systems (wheel dependent)
- › Almost pseudo error-free detection thanks to state-of-the-art Fraunhofer ISAR image processing
- › Wheel sizes up to 24"
- › Permanent, stable image quality due to a degradation-free detector
- › Single test program for multiple systems

TECHNICAL DATA

Tube voltage	160 kV
Tube performance	1.000 W
Pixel size	100 - 400 μ m



- › Ideal for inline operation in the mass production
- › Extremely high throughput thanks to industrial robot





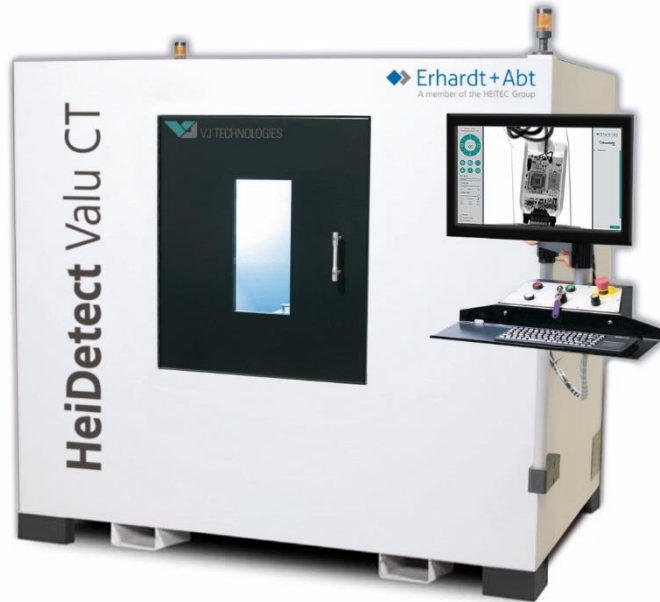
TECHNICAL DATA

Tube voltage	160 - 225 kV
Tube performance	variable
Pixel size	100 - 400 μm

FAKTEN:

- › High flexibility in workpiece geometry
- › Compact X-ray testing machine specifically designed for the inline use in the production line
- › Flexible workpiece positioning through a 6-axis robot
- › Permanent, stable image quality due to a degradation-free detector
- › Less test positions because of the big detector area
- › Defect detection nearly pseudo-free
- › Modern analyzation through Fraunhofer ISAR



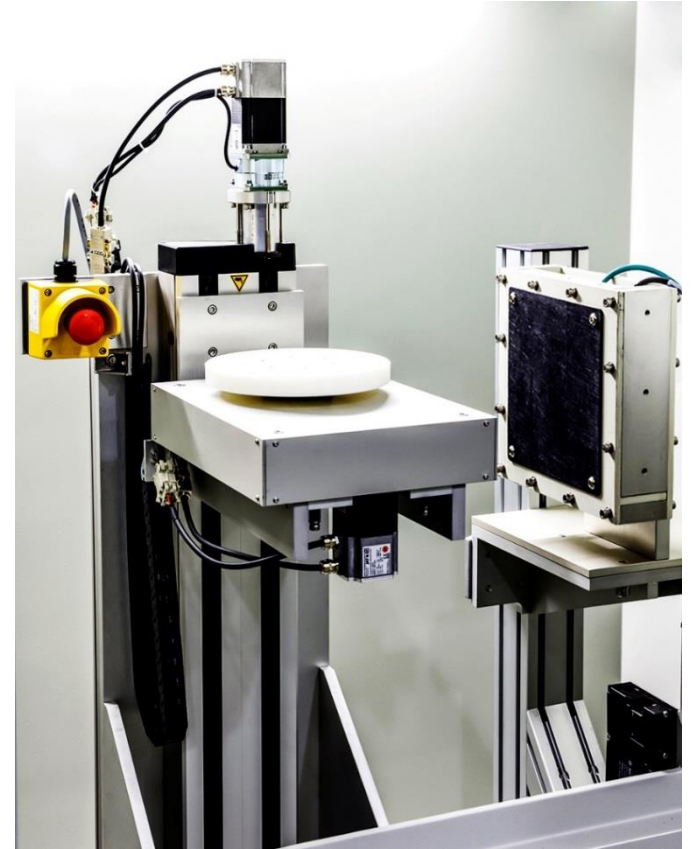


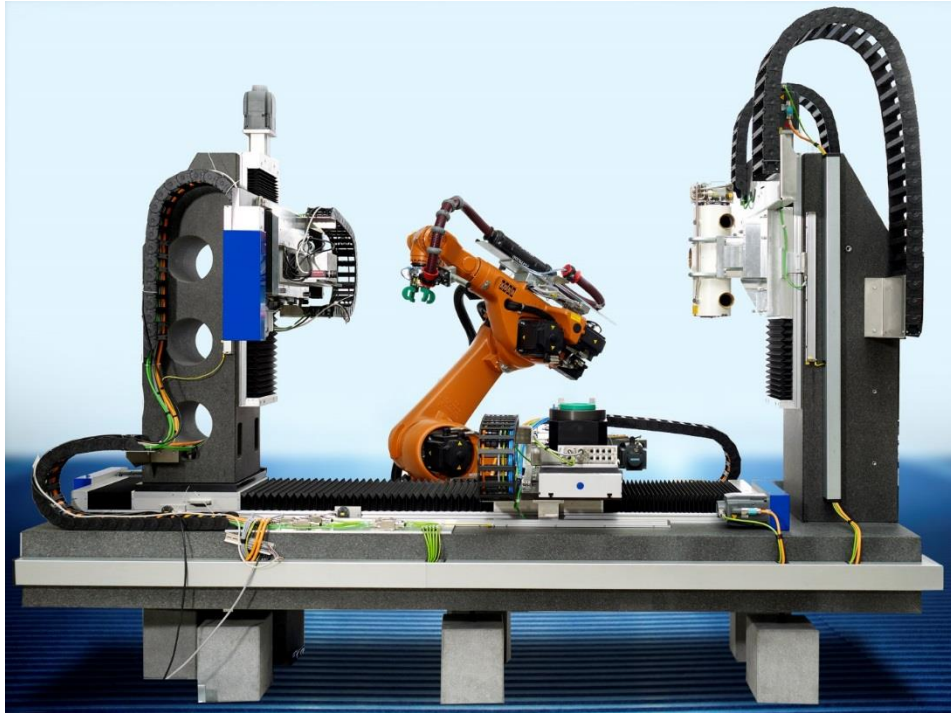
FAKTEN:

- › Kostengünstiges CT-System zur Erstellung von 2D / 3D Aufnahmen für Erstbemusterungen und serienbegleitende Prüfungen
- › Einfache Bedienung – es sind keine größeren Vorkenntnisse im CT-Bereich notwendig
- › Umfassendes Komplettsystem – 3D-Scan, Rekonstruktion und Auswertung
- › Efficiency through 3D CT scan in a short time with an innovative user interface
- › Scan-Parameter können optimal auf Ihre Bauteile abgestimmt werden

TECHNICAL DATA

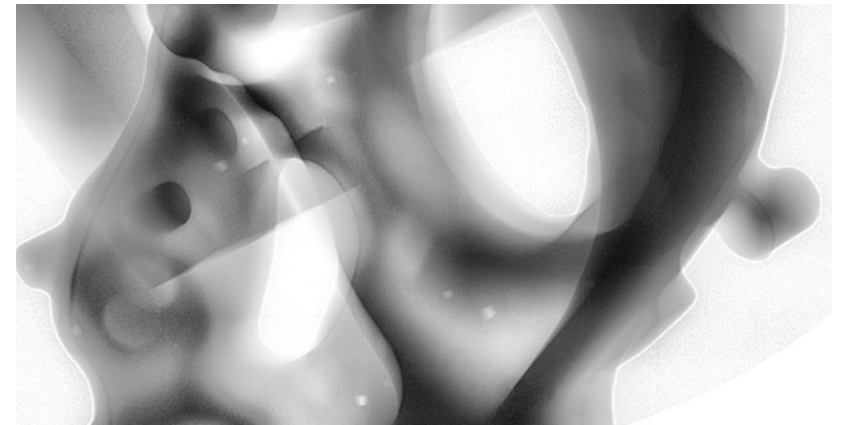
Tube voltage	160 kV
Tube performance	500 W
Pixel size	130 µm





KEY FACTS:

- › Highly flexible 2D/3D X-Ray test system
- › DRAGONFLY capture technology from Fraunhofer
- › 7-axis system + 6-axis robot and a robust granite substructure for high precision and flexibility
- › Inline operation of the system possible



TECHNICAL DATA

Tube voltage	125 kV
Tube performance	80 kW
Pixel size	100 μm



KEY FACTS:

- › Fully automated and flexible system for X-ray and computed tomography
- › Allows for non-destructive testing of a wide range of different workpiece
- › Different workpieces can be set up within a few minutes during active test operation
- › Large detector with high resolution and very short exposure time

TECHNICAL DATA

Tube voltage	160 kV
Tube performance	1.800 W
Pixel size	200 µm

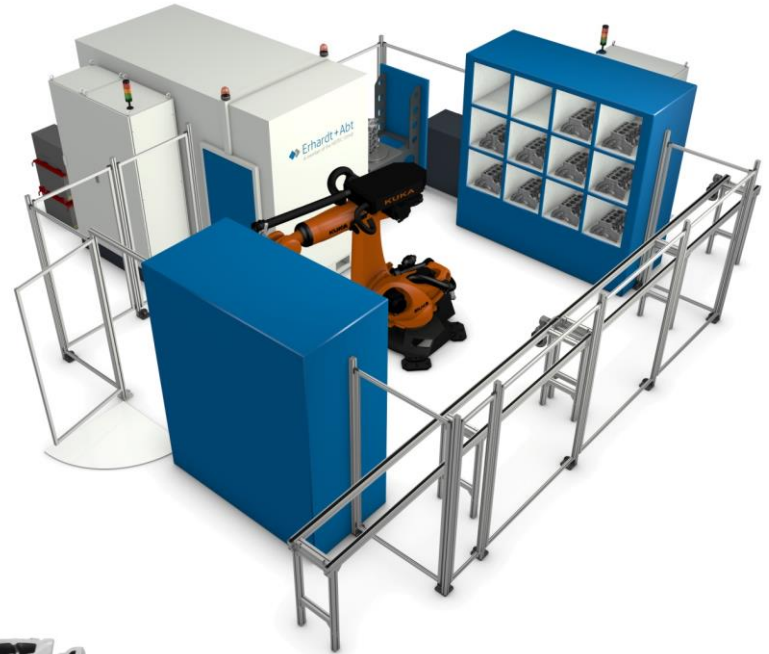
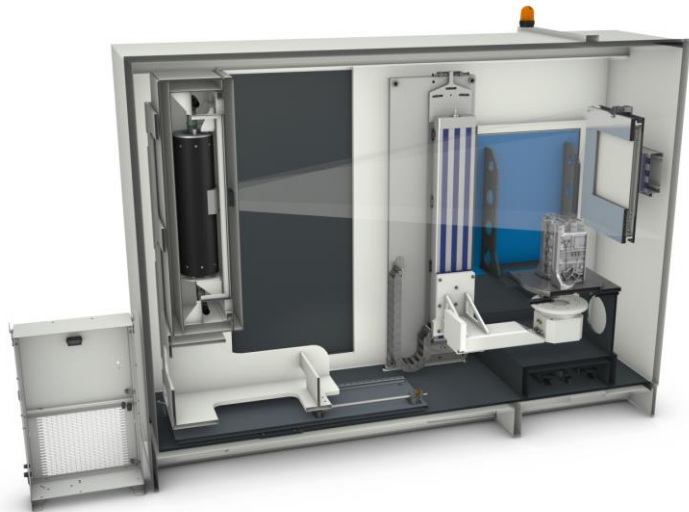




KEY FACTS:

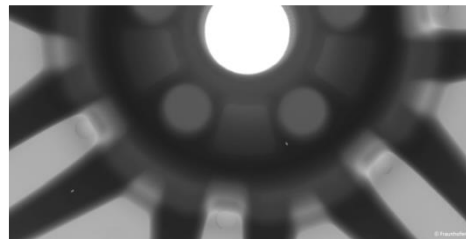
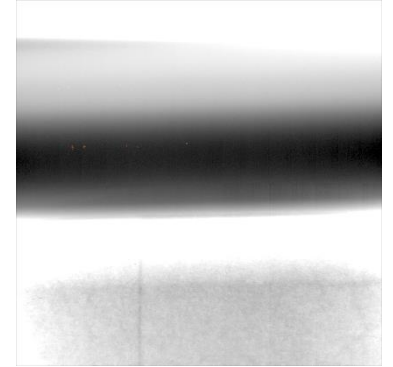
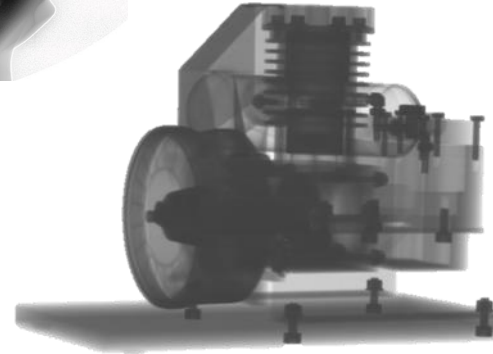
- › 100% inspection directly in the production line
- › High power system with up to 450 kV
- › Cycle time under 60 sec – handling & scan
- › Developed for large volume components
- › Expandable system concept customised to the customer definitions
- › Volume Graphics Software for automatic detection with integrated Fraunhofer algorithms
- › Separation of production process and CT inspection process possible
- › Inline CT and automation from one source

TECHNICAL DATA	
Tube voltage	225/320/450 kV
Tube performance	1.800 W
Pixel size	300 µm





- › Wheels
- › Powertrain
- › E-Mobility
- › Suspension
- › Circuit boards
- › Electronics
- › Plastic components
- › Weld inspection
- › Turbine blades
- › Aerospace
- › Shoes





HEITEC PTS GmbH

Hauptstraße 49

73329 Kuchen / Fils

Tel.: +49 7331 3046-0

Fax: +49 7331 3046-11

Mail: Info@heitec-pts.de

Web: www.heitec-pts.de